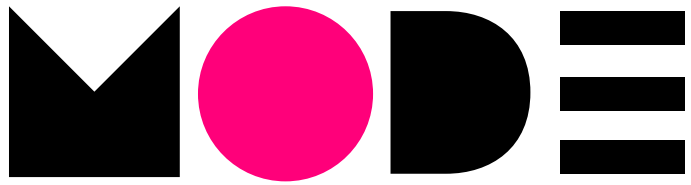


RETAIL AT



LONDON





CGI VIEW OF THE PODIUM LEVEL AT MODE LONDON

A SEVEN DAY DESTINATION



LONDON'S VIBRANT HEART

Redemption Roasters



Barbican

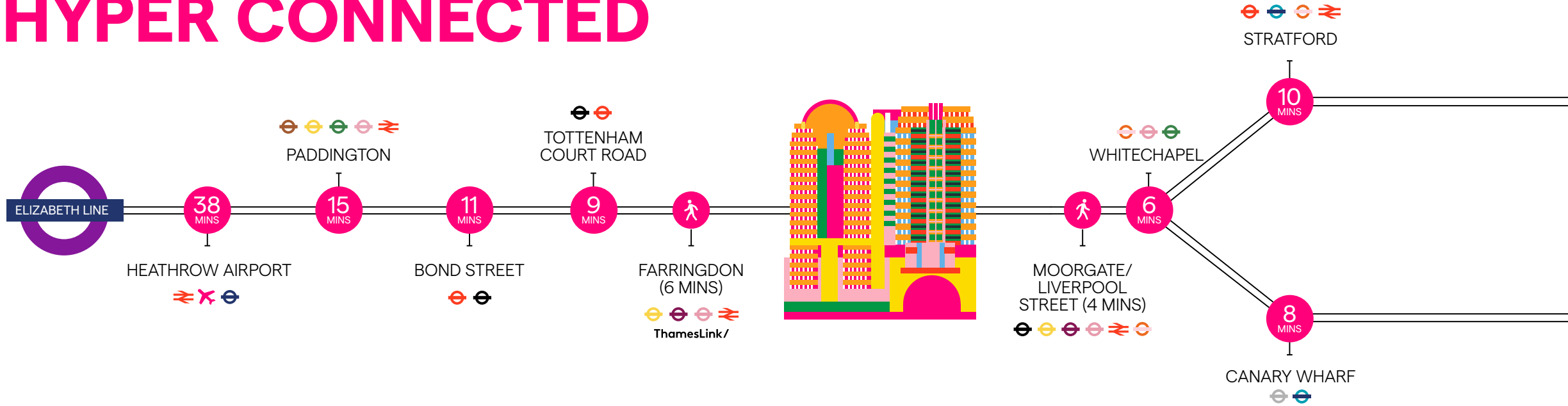


Barbie Green



Broadgate Circle

HYPER CONNECTED



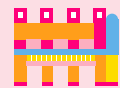
MOORGATE - 4 MIN WALK



ST PAUL'S - 5 MIN WALK



FARRINGDON - 6 MIN WALK



BARBICAN - 6 MIN WALK



- CENTRAL
- BAKERLOO
- PICCADILLY
- WATERLOO & CITY
- CIRCLE
- DLR
- DISTRICT
- OVERGROUND
- HAMMERSMITH
- ELIZABETH
- JUBILEE
- NATIONAL RAIL
- AIRPORT EXPRESS
- NORTHERN
- THAMESLINK
- METROPOLITAN
- VICTORIA

* Door to door travel times taken from TFL and Google

AVAILABLE SPACE

RETAIL UNITS	GIA (SQ FT)
UNIT 1	1,709
UNIT 2	4,194
TOTAL	5,903 SQ FT



À LA
MODE

CGI VIEW OF THE NEW PODIUM LEVEL



ENLARGED AMENITY-RICH PODIUM



CGI VIEW OF THE NEW PODIUM LEVEL

RETAIL SPACE

PODIUM LEVEL



- Retail
- Common parts

INDICATIVE ONLY, NOT TO SCALE,
SUBJECT TO FINAL DESIGN



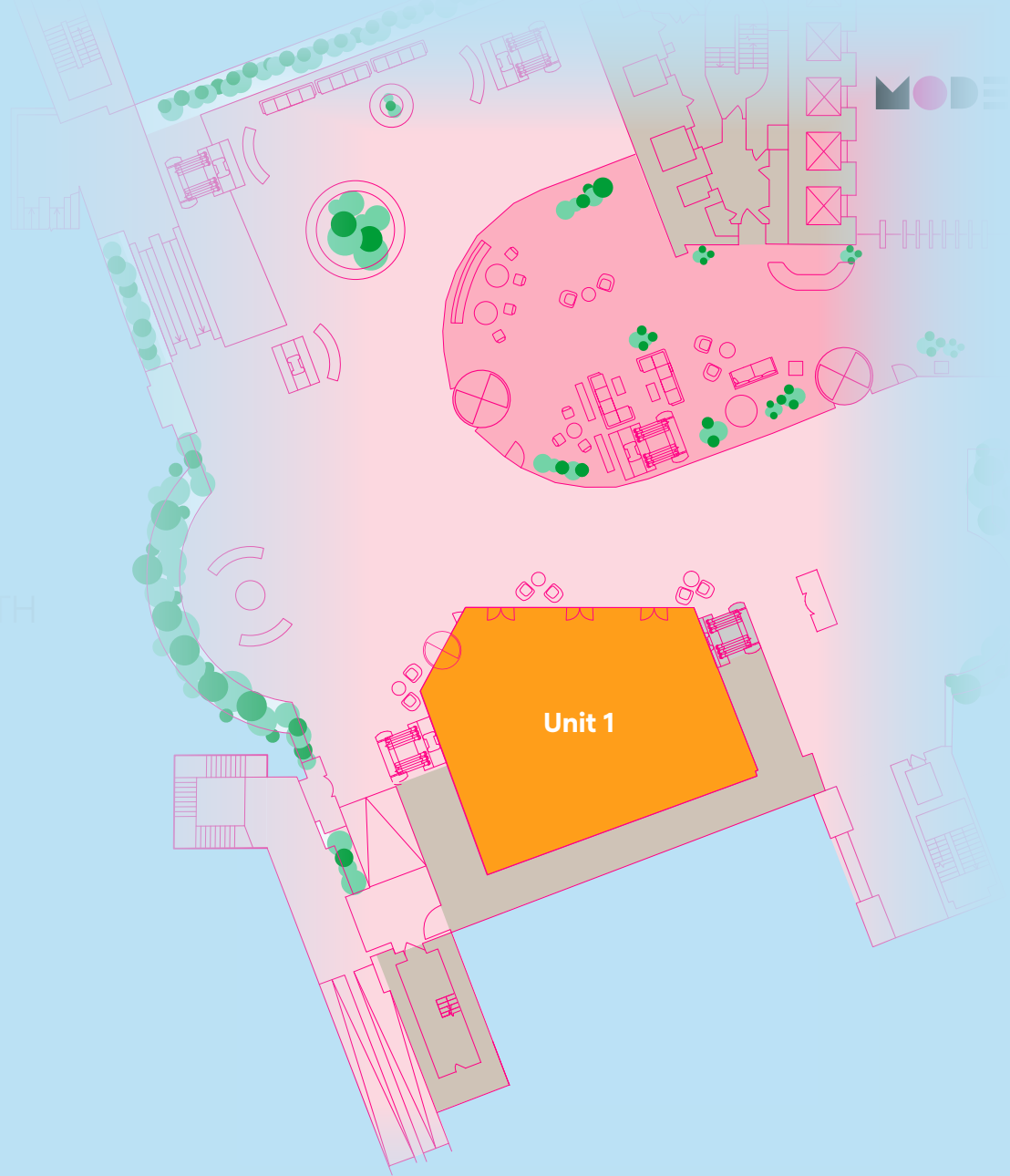
RETAIL SPACE

UNIT 1

GIA
1,709 sq. ft

-  Retail
-  Common parts



INDICATIVE ONLY, NOT TO SCALE,
SUBJECT TO FINAL DESIGN



RETAIL SPACE

UNIT 2

GIA
4,194 sq. ft

-  Retail
-  Common parts

INDICATIVE ONLY, NOT TO SCALE,
SUBJECT TO FINAL DESIGN



CONTACT US

RETAIL & LEISURE ENQUIRIES

CFC

Alex Lowry

alex@cfcommercial.co.uk

+44 (0)203 370 4333

+44 (0)7801 966 825

Catherine Johnson

catherine@cfcommercial.co.uk

+44 (0)203 370 4334

+44 (0)738 674 0192

Important notice relating to the Misrepresentation Act 1967 and the Property Misdescriptions Act 1991: (i) the particulars are set out as a general outline only for guidance of intending purchasers or lessees and do not constitute, nor constitute part of, an offer or contract (ii) all descriptions, dimensions, references to condition and necessary permission for use and occupation, and other details are given in good faith and are believed to be correct, but any intending purchasers or occupiers should not rely on them as statements or representations of fact, but must satisfy themselves by inspection or otherwise as to the correctness of each of them. Q3 2024.

DISCOVER MORE AT [MODE-LONDON.COM](https://www.mode-london.com)